



PANEL LEG SERIES, TREATMENT TABLES

MODELS: 91010, 91020 91030 and 91013
with ADJUSTABLE BACKREST, OR
OPTIONAL 088 FLAT TOP



ASSEMBLY INSTRUCTIONS FOR PANEL LEG SERIES, TREATMENT TABLES

MODELS: 91010, 91020, 911030 & 91013 with ADJUSTABLE BACKREST, OR OPTIONAL 088 FLAT TOP

MAXIMUM WEIGHT CAPACITY 500 LBS

Thank you for counting on Clinton to meet your medical equipment needs by purchasing this fine equipment. All Clinton equipment is designed and manufactured to provide years of dependable service because we want you as a customer now and in the future. Below are easy to follow instructions on how to properly assemble your equipment. Please contact us at 800-441-9131 if you experience any difficulty with the assembly or have questions.

INTENDED USE

Clinton treatment table, models 91010, 91020, 91030 & 91013, are specifically designed and engineered for the use by a single person at a time, who is attended to and observed by trained medical personnel. Never leave anyone on the table unattended. Person's weight and the combination of force exerted on the table during treatment is not to exceed a total of 500 lbs.

Hardware

- 2-3/4" Pan Head Bolts..... 8
- 5/16" Flat Washers (*Adjustable Backrest*)..... 8
- 5/16" Flat Washers (*Flat Top*)..... 4
- 1/4" KEPS Nuts 4
- Barrel Nuts..... 4
- 1" Pan Head Bolts (*Adjustable Backrest*) 8
- 1-1/4" Pan Head Bolt (*91013 only*) 4

Tools Required

- Screw Gun
- 7/16" Wrench
- Flat Head Screwdriver

Time Required

- 20 minutes

IF TOP IS ATTACHED TO FRAME, SKIP TO STEP 4

1

Place the upholstered sections on a flat surface with the foot end on the left and fabric tag toward the center of the table as shown. Place the head end on right with hinge toward the center of the table. Place frame on top with channel, teeth down, above the head end.

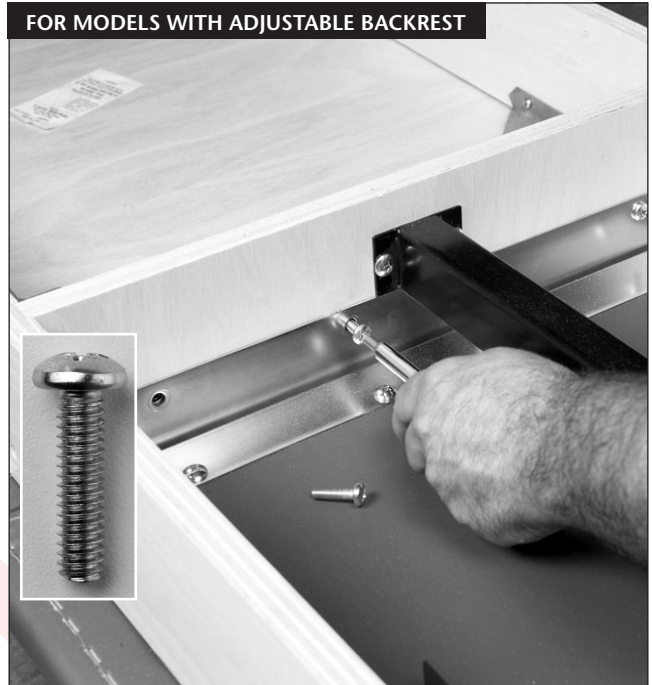
FOR MODELS WITH ADJUSTABLE BACKREST



2

Align the holes in the hinge with the holes in the center board and fasten to center board using 4 silver, 1" pan head bolts.

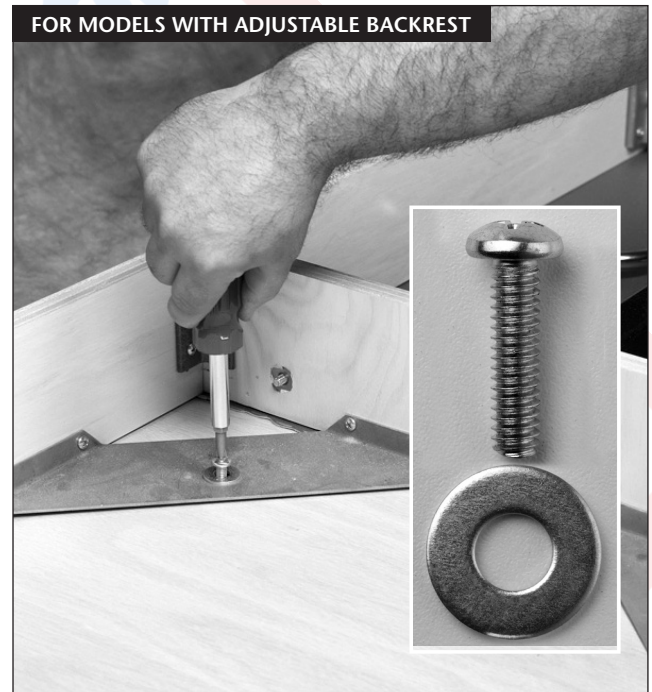
FOR MODELS WITH ADJUSTABLE BACKREST



3

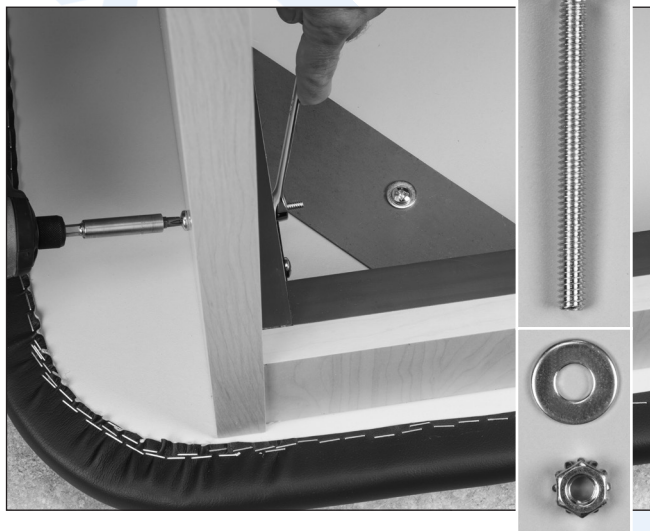
Finger tighten the top's foot end to frame using 4 silver, 1" pan head bolts and 5/16" washers. Slide the foot end toward the center board and finish tightening screws.

FOR MODELS WITH ADJUSTABLE BACKREST



4

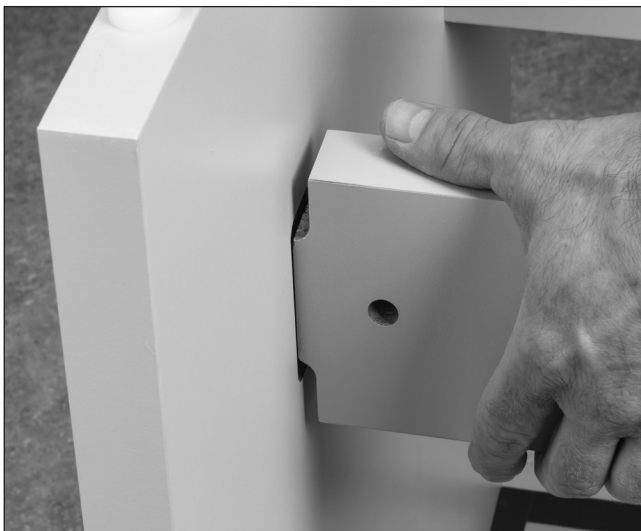
Place the table's frame upside down on a solid surface that will not mar the upholstery. Place panel leg against the outside of the frame with the circle cutouts facing toward the frame. Insert the 2-3/4" pan head bolts through the holes in the leg and frame and secure on the inside of the frame with a flat washer and a KEPS nut. Tighten using a 7/16" wrench and a screw gun. Repeat for the opposite leg.



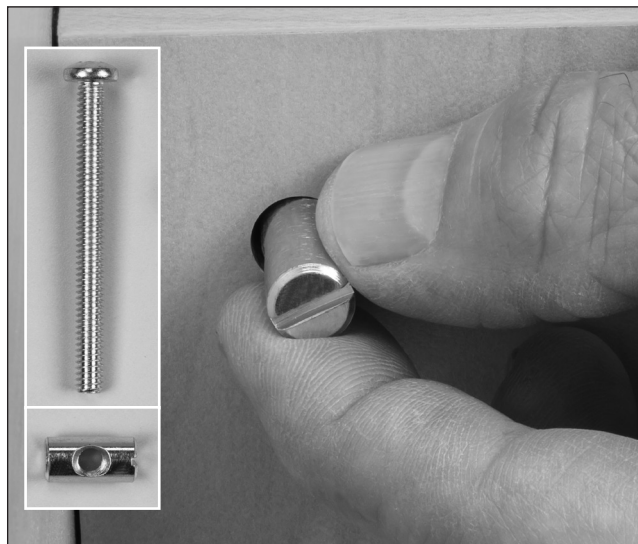
5

Attach the spanners by inserting the flange of the spanners into the notches in the legs. Next, insert the barrel nuts into the holes in the ends of the two spanners. Make sure the slot in the barrel nut faces out and is parallel with the spanner. You can turn the nut with a flat head screwdriver to adjust its position. Push the 2-3/4" pan head bolts through the legs and hand tighten into the barrel nuts. (See photos 1 & 2)

(Photo 1)

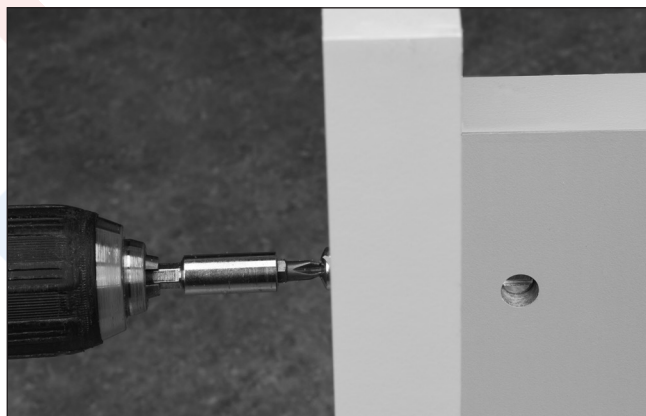


(Photo 2)



6

Tighten securely with a screw gun.



7

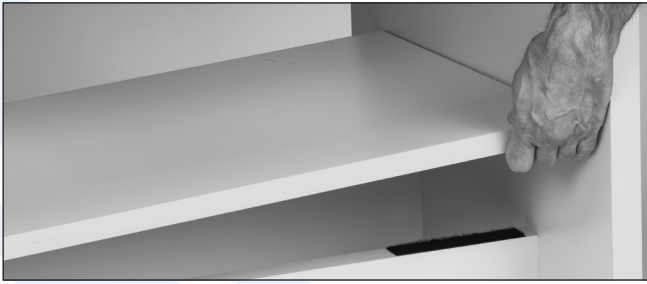
91020, 91030 & 91013 HOOK STRIPS

If not attached, place hook strips (included) on each end of the two spanners. Loop strips are pre-attached to the bottom of the shelf.



8**91020 SHELF**

Position shelf on the two spanners

**9****TIERED SHELF/DRAWER BOX**

Remove the drawers from the drawer box. Invert the drawer box, or tiered shelf, depending on your model, so the four holes are facing up. Line up the holes in the shelf with the holes in the drawer box or tiered shelf and fasten using the four 1-1/4" pan head bolts.

Note: The drawer box or tiered shelf can be positioned at the head end or foot end of the table. When attaching the unit to the full shelf, position it for the desired foot or head location.

**10****TIERED SHELF/DRAWER BOX**

Invert the tiered shelf unit or drawer box, depending on your model, and shelf assembly and place it on the spanner

**11****DRAWER BOX**

Attach pulls and insert drawers.



FOR SAFETY PURPOSES, TAKE TIME TO CHECK ALL FASTENERS TO INSURE THAT THEY ARE SECURELY TIGHTENED AND THAT THE TABLE HAS BEEN PROPERLY ASSEMBLED ACCORDING TO THESE INSTRUCTIONS.

CARE & CLEANING

Clinton products are built to be durable. With proper care, your Clinton equipment will provide years of superior looks and performance. Clean table with a soft cloth and any mild cleaning agent that may be required for sanitation. NEVER use abrasive scrubbing agents that may scratch the surfaces. **Before using any cleaning agents, try them on a small inconspicuous area to insure that they will not harm the upholstery or any other surface.**

Do not use alcohol based cleaning agents.

Periodically check that all fasteners are secure and operating properly.



800-441-9131 • 717-848-3519

Toll-Free Fax 866-522-1233

Fax 717-843-5871

www.clinton-ind.com