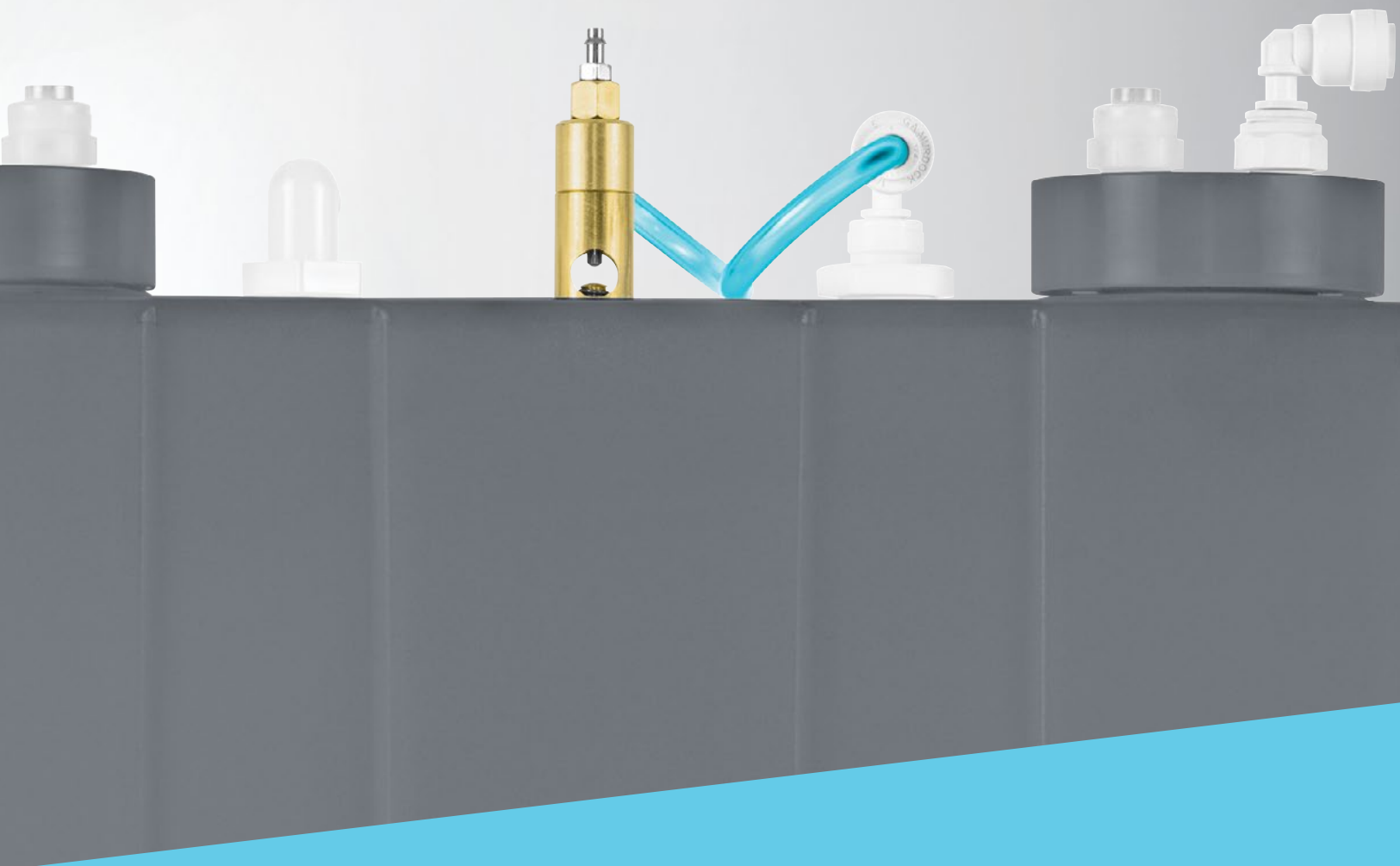




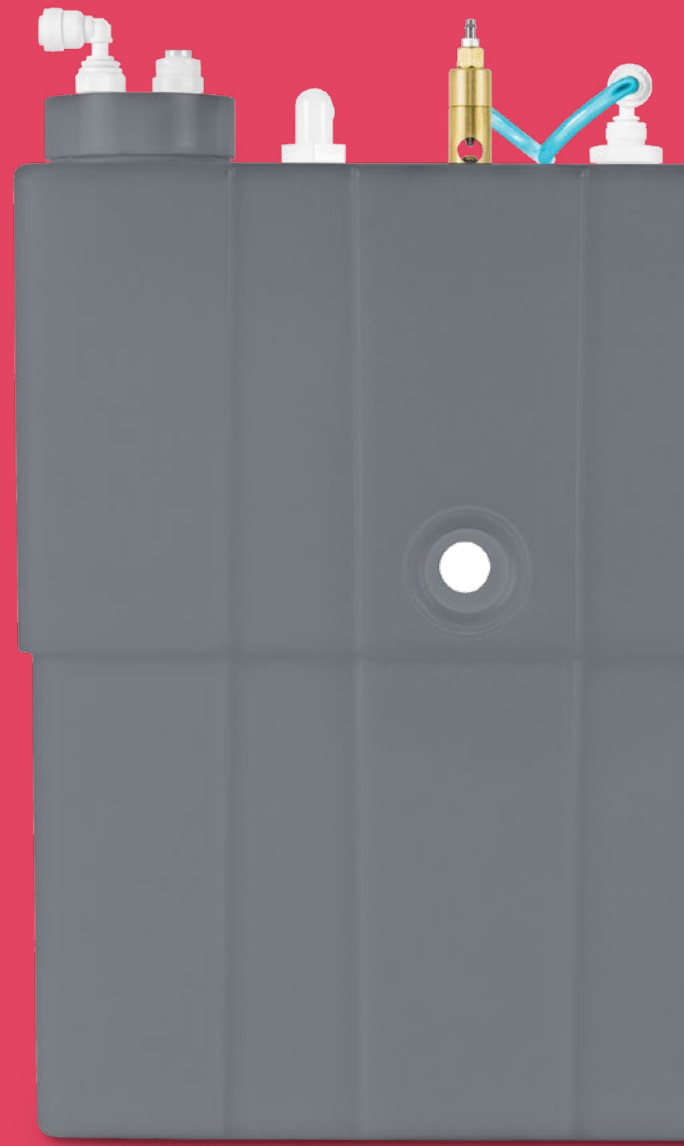
## VistaCool™ Direct-to-Drain Cooling System for Autoclave Wastewater



# Say goodbye to your condensation bottles.

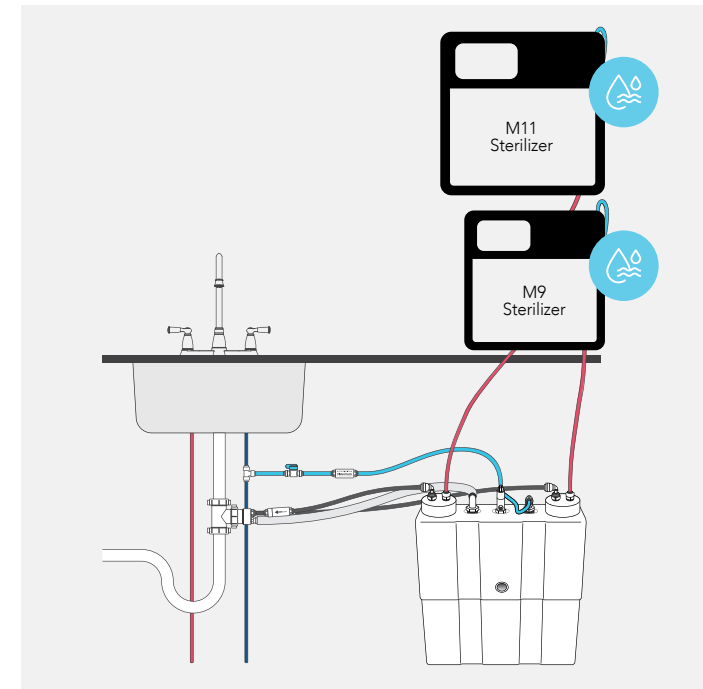
The steam and condensation wastewater produced by your sterilizer can be time-consuming and messy to empty from condenser bottles. It can even melt plumbing if not cooled sufficiently before going down the drain.

Discover a better solution. The VistaCool™ Direct-to-Drain Cooling System for Autoclave Wastewater is designed to reduce the temperature of sterilizer wastewater before sending it directly and safely to the drain—eliminating condensation bottles and tanks.



## Auto-Drain

The optional VistaCool Direct-to-Drain System for Autoclave Wastewater reduces the temperature of sterilizer wastewater before sending it directly and safely to the drain. This non-electric, self-monitoring and self-regulating system frees your team to spend more time chairside and less time maintaining equipment.



Designed to be compatible with:  
Any two Midmark M9® and M11®  
Steam Sterilizers

Includes one M9-05X or M11-05X adapter  
(9A586007).

VistaCool is the only direct-to-drain product designed and tested to work with Midmark steam sterilizers.



## IMPROVE WORKFLOW WITH AUTOFILL

Combine VistaCool with the Midmark Autofill Accessory and a water filtration system for a no-touch water solution from filling to emptying your sterilizer.

# VISTACOOOL™ IS A CONVENIENT SOLUTION.

Eliminating the need to manually empty condensation tanks, VistaCool can allow you and your staff to spend more time with patients and less time tending to office equipment. This safe and reliable solution is designed to enhance office efficiency. Less work for staff means more time to care for patients.

## PROTECTS STAFF

- Eliminates hazardous handling of hot condensation tanks
- Saves time by reducing required user maintenance thanks to a non-electric, self-monitoring system

## PROTECTS DRAINS

- Helps prevent hot sterilizer wastewater from melting plumbing
- Provides built-in backflow prevention that meets or exceeds local plumbing codes

## PROTECTS CABINETS

- Helps prevent mold and mildew caused by spills and exhaust from condensation tanks
- Helps protect cabinets from spills by sending cooled wastewater directly and safely to the drain

# SPECIFICATIONS

9A586002 VistaCool Unit	
Compatible sterilizers:	M9® and M11® (-050 series, -040 series and -020 series)
Tank material:	Polyethylene - Gray
Tank dimensions w/ fittings:	4" W x 13" L x 17" H (10.2 cm x 33.1 cm x 43.2 cm)
Tank volume:	3 gal (11.4 liters)
Tank weight w/ water + fittings:	28 lb (12.7 kg)
Approximate shipping weight:	10 lb (4.5 kg)
Coolant water connection:	Supply fittings for 1/4" O.D. feed tubing included. To be provided by installer.
Max. coolant water pressure:	100 psi (6.9 bar)
Max. altitude (if using air gap):	6,561 ft (2,000 m)

Accessories	
9A586004 Air Gap Kit	(needed only if required by local code)
9A586006	Double VistaCool adjustable tank stand
*9A586007	M9/M11-05X Adapter Kit
*9A586003	M9/M11-04X and M9/M11-02X Adapter Kit

\*The double unit includes one adapter (9A586007). If two sterilizers will be installed, choose the appropriate adapter for the second sterilizer.

## VistaCool™

Midmark is an ISO 13485 and ISO 9001 Certified Company. Certain products are not included. See the complete list at: [midmark.com/ISO](http://midmark.com/ISO)

For more information, contact your authorized Midmark distributor or call: 1.800.MIDMARK Outside the USA call: 1.937.526.3662 or visit our website: [midmark.com](http://midmark.com)

© 2024 Midmark Corporation, Versailles, Ohio USA  
Manufactured by Crosstex International, Inc., for distribution by Midmark Corporation, Versailles, OH

The VistaCool™ Direct-to-Drain Cooling System for Autoclave Wastewater is manufactured by and a trademark of Crosstex International, Inc., a Cantel Medical Company.

Products subject to improvement changes without notice.  
Litho in USA.  
007-10159-00 Rev. C1 (7/24)

